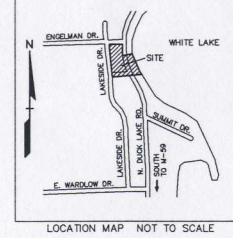
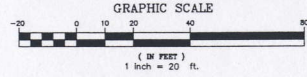


BENCHMARKS
 BENCHMARK #1:
 CHEELED SQUARE IN CONCRETE
 ELEV. 100.87 (NAVD 83)
 BENCHMARK #2:
 CHEELED SQUARE IN CONCRETE
 ELEV. 102.87 (NAVD 83)

TOPOGRAPHIC SURVEY DISCLAIMER:
 PORTION OF TOPOGRAPHIC SURVEY, INCLUDING EXISTING UTILITIES, EXISTING ELEVATIONS, EXISTING PHYSICAL FEATURES AND STRUCTURES OUTSIDE OF THE LAKE AREA WAS PROVIDED TO PROFESSIONAL ENGINEERING ASSOCIATES, INC. ON A TOPOGRAPHIC SURVEY BY THE MICHIGAN DEPARTMENT OF TECHNOLOGY, MANAGEMENT AND BUDGET DATED SEPTEMBER 8, 2006.

REFERENCE DRAWINGS
 TOPOGRAPHIC SURVEY PROVIDED BY MICHIGAN DEPARTMENT OF TECHNOLOGY, MANAGEMENT AND BUDGET
 ON 03/28/06
 ELECTRIC AND GAS PROVIDED BY MICHIGAN DEPARTMENT OF TECHNOLOGY, MANAGEMENT AND BUDGET
 MAP RECEIVED FROM CONSERVATORS INDEX 1-13-10



NO.	DATE	REVISIONS
1	03/28/06	ISSUED FOR PERMIT
2	04/10/06	REVISED PER COMMENTS
3	04/10/06	REVISED PER COMMENTS
4	04/10/06	REVISED PER COMMENTS
5	04/10/06	REVISED PER COMMENTS
6	04/10/06	REVISED PER COMMENTS
7	04/10/06	REVISED PER COMMENTS
8	04/10/06	REVISED PER COMMENTS
9	04/10/06	REVISED PER COMMENTS
10	04/10/06	REVISED PER COMMENTS
11	04/10/06	REVISED PER COMMENTS
12	04/10/06	REVISED PER COMMENTS
13	04/10/06	REVISED PER COMMENTS
14	04/10/06	REVISED PER COMMENTS
15	04/10/06	REVISED PER COMMENTS
16	04/10/06	REVISED PER COMMENTS
17	04/10/06	REVISED PER COMMENTS
18	04/10/06	REVISED PER COMMENTS
19	04/10/06	REVISED PER COMMENTS
20	04/10/06	REVISED PER COMMENTS
21	04/10/06	REVISED PER COMMENTS
22	04/10/06	REVISED PER COMMENTS
23	04/10/06	REVISED PER COMMENTS
24	04/10/06	REVISED PER COMMENTS
25	04/10/06	REVISED PER COMMENTS
26	04/10/06	REVISED PER COMMENTS
27	04/10/06	REVISED PER COMMENTS
28	04/10/06	REVISED PER COMMENTS
29	04/10/06	REVISED PER COMMENTS
30	04/10/06	REVISED PER COMMENTS
31	04/10/06	REVISED PER COMMENTS
32	04/10/06	REVISED PER COMMENTS
33	04/10/06	REVISED PER COMMENTS
34	04/10/06	REVISED PER COMMENTS
35	04/10/06	REVISED PER COMMENTS
36	04/10/06	REVISED PER COMMENTS
37	04/10/06	REVISED PER COMMENTS
38	04/10/06	REVISED PER COMMENTS
39	04/10/06	REVISED PER COMMENTS
40	04/10/06	REVISED PER COMMENTS
41	04/10/06	REVISED PER COMMENTS
42	04/10/06	REVISED PER COMMENTS
43	04/10/06	REVISED PER COMMENTS
44	04/10/06	REVISED PER COMMENTS
45	04/10/06	REVISED PER COMMENTS
46	04/10/06	REVISED PER COMMENTS
47	04/10/06	REVISED PER COMMENTS
48	04/10/06	REVISED PER COMMENTS
49	04/10/06	REVISED PER COMMENTS
50	04/10/06	REVISED PER COMMENTS
51	04/10/06	REVISED PER COMMENTS
52	04/10/06	REVISED PER COMMENTS
53	04/10/06	REVISED PER COMMENTS
54	04/10/06	REVISED PER COMMENTS
55	04/10/06	REVISED PER COMMENTS
56	04/10/06	REVISED PER COMMENTS
57	04/10/06	REVISED PER COMMENTS
58	04/10/06	REVISED PER COMMENTS
59	04/10/06	REVISED PER COMMENTS
60	04/10/06	REVISED PER COMMENTS
61	04/10/06	REVISED PER COMMENTS
62	04/10/06	REVISED PER COMMENTS
63	04/10/06	REVISED PER COMMENTS
64	04/10/06	REVISED PER COMMENTS
65	04/10/06	REVISED PER COMMENTS
66	04/10/06	REVISED PER COMMENTS
67	04/10/06	REVISED PER COMMENTS
68	04/10/06	REVISED PER COMMENTS
69	04/10/06	REVISED PER COMMENTS
70	04/10/06	REVISED PER COMMENTS
71	04/10/06	REVISED PER COMMENTS
72	04/10/06	REVISED PER COMMENTS
73	04/10/06	REVISED PER COMMENTS
74	04/10/06	REVISED PER COMMENTS
75	04/10/06	REVISED PER COMMENTS
76	04/10/06	REVISED PER COMMENTS
77	04/10/06	REVISED PER COMMENTS
78	04/10/06	REVISED PER COMMENTS
79	04/10/06	REVISED PER COMMENTS
80	04/10/06	REVISED PER COMMENTS
81	04/10/06	REVISED PER COMMENTS
82	04/10/06	REVISED PER COMMENTS
83	04/10/06	REVISED PER COMMENTS
84	04/10/06	REVISED PER COMMENTS
85	04/10/06	REVISED PER COMMENTS
86	04/10/06	REVISED PER COMMENTS
87	04/10/06	REVISED PER COMMENTS
88	04/10/06	REVISED PER COMMENTS
89	04/10/06	REVISED PER COMMENTS
90	04/10/06	REVISED PER COMMENTS
91	04/10/06	REVISED PER COMMENTS
92	04/10/06	REVISED PER COMMENTS
93	04/10/06	REVISED PER COMMENTS
94	04/10/06	REVISED PER COMMENTS
95	04/10/06	REVISED PER COMMENTS
96	04/10/06	REVISED PER COMMENTS
97	04/10/06	REVISED PER COMMENTS
98	04/10/06	REVISED PER COMMENTS
99	04/10/06	REVISED PER COMMENTS
100	04/10/06	REVISED PER COMMENTS

GENERAL NOTES:
 THESE NOTES APPLY TO ALL CONSTRUCTION ACTIVITIES ON THIS PROJECT.
 1. ALL DIMENSIONS SHOWN ARE TO BACK OF CURB, FACE OF SIDEWALK, PROPERTY LINE, UNLESS OTHERWISE NOTED.
 2. REFER TO SHEET C-4 FOR ON-SITE PAVING DETAILS.
 3. REFER TO SHEET C-4 FOR ON-SITE SIDEWALK RAMP DETAILS.
 4. ALL CONSTRUCTION SHALL BE IN ACCORDANCE WITH MICHIGAN DEPARTMENT OF TECHNOLOGY, MANAGEMENT AND BUDGET (MTMB) AND MICHIGAN DEPARTMENT OF NATURAL RESOURCES (DNR) CURRENT STANDARDS AND REGULATIONS.
 5. THE CONTRACTOR SHALL NOTIFY THE MTMB, MICHIGAN HIGHWAYS TOWNSHIP, AND PROFESSIONAL ENGINEERING ASSOCIATES (PEA) AND/OR THE AUTHORITY HAVING JURISDICTION 3 BUSINESS DAYS PRIOR TO THE BEGINNING OF CONSTRUCTION.
 6. ANY WORK WITHIN THE STREET OR HIGHWAY RIGHT-OF-WAYS SHALL BE PERFORMED IN ACCORDANCE WITH THE REQUIREMENTS OF THE AGENCIES HAVING JURISDICTION AND SHALL NOT BEGIN UNTIL ALL NECESSARY PERMITS HAVE BEEN ISSUED FOR THE WORK.

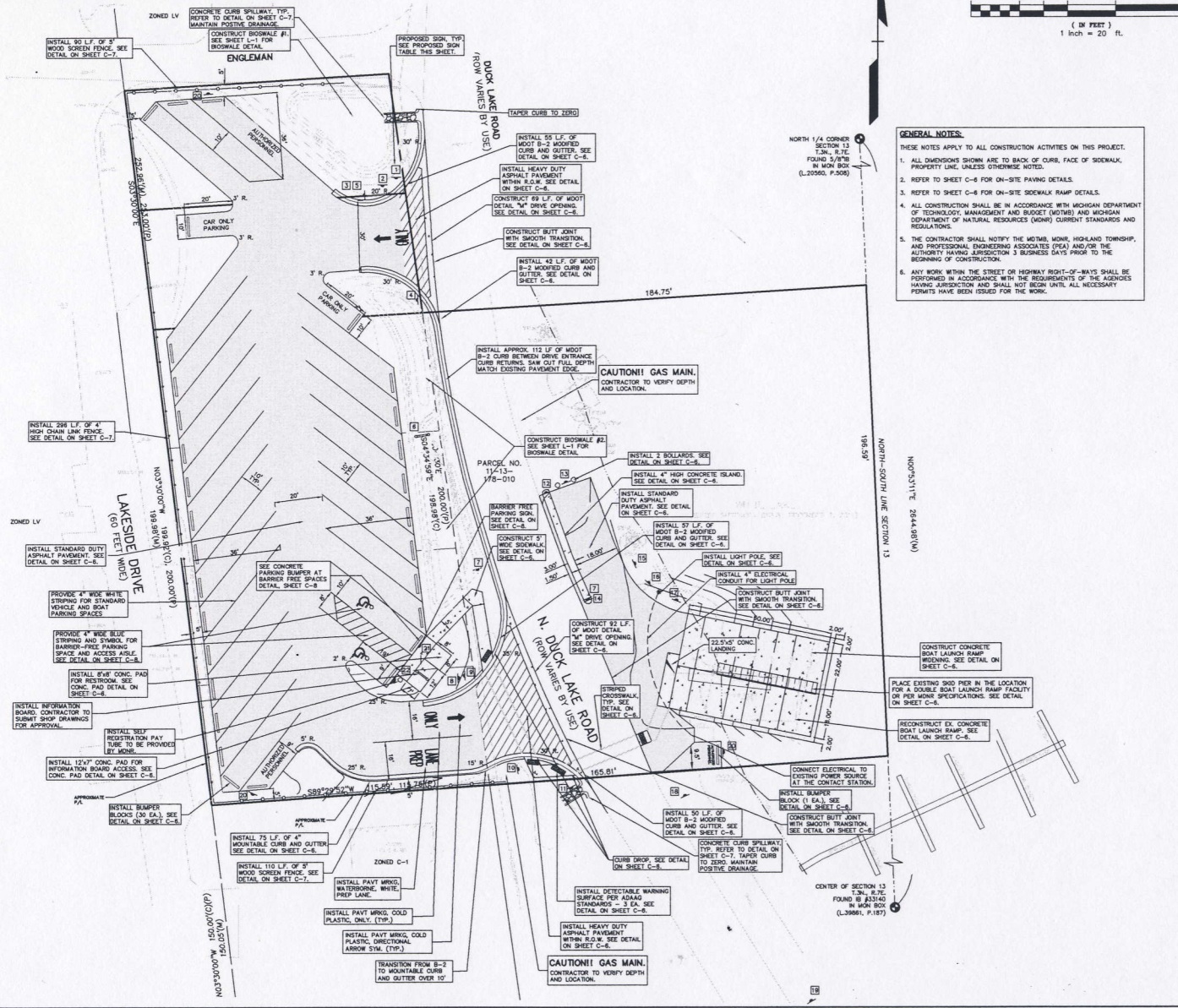
- LEGEND (EXISTING)**
- FOUND IRON
 - IRON/CAP SET (A3114)
 - CATCH BASINS
 - MANHOLE
 - LIGHT POLE
 - POWER POLE
 - WATER SHUT OFF VALVE
 - BURIED GAS MARKER
 - TELEPHONE RISER
 - MAIL BOX
 - CONTOUR LINE ELEVATION
 - SPOT ELEVATION AT MARKER
 - BARBED WIRE FENCE

- LEGEND (PROPOSED)**
- STANDARD DUTY ASPHALT PAVEMENT - SEE DETAIL ON SHEET C-6.
 - DEEP STRENGTH ASPHALT PAVEMENT - SEE DETAIL ON SHEET C-6.
 - CONCRETE PAVEMENT - SEE DETAILS ON SHEET C-6.
 - 5' HIGH WOOD SCREEN FENCE - SEE DETAIL ON SHEET C-7.
 - 4' HIGH CHAIN LINK FENCE - SEE DETAIL ON SHEET C-7.

- PROPOSED SIGN LEGEND**
- 1 (W1-2) NON-VEHICULAR (PEDESTRIAN) SIGN (36"x36")
 - 2 (W1-3) SUPPLEMENTAL PLaque SIGN "WHAED"
 - 3 BOAT LAUNCH ACCESS SIGN
 - 4 "RECREATIONAL PASSPORT REQUIRED FOR ENTRY" MONR SIGN
 - 5 "DANGER HIGH VOLTAGE" MONR SIGN
 - 6 "SITE HOURS 4AM-11PM" MONR SIGN
 - 7 "WHITE LAKE BOATING ACCESS SITE" MONR SIGN
 - 8 "(W3-2) "NO LEFT TURN" SIGN
 - 9 "DANGER HIGH VOLTAGE" MONR SIGN
 - 10 "DO NOT ENTER" SIGN
 - 11 (R1-1) "STOP" SIGN
 - 12 (W1-2) NON-VEHICULAR (PEDESTRIAN) SIGN (36"x36")
 - 13 (W1-7) SUPPLEMENTAL ARROW PLaque SIGN
 - 14 (O4-3R) TYPE 3 OBJECT MARKER SIGN
 - 15 ENTRANCE FEE REQUIRED MONR SIGN
 - 16 (O4-3R) TYPE 3 OBJECT MARKER SIGN
 - 17 "NO SWIMMING, NO DIVING, NO WADING" MONR SIGN
 - 18 "NO PARKING ANY TIME" SIGN
 - 19 "ENTRY LIMITED TO AVAILABLE PARKING" MONR SIGN
 - 20 "SHOW NO MAKE 100 FT. ANY SHORE" MONR SIGN
 - 21 "KEEP BEACH CLEAR" MONR SIGN
 - 22 (W1-2) NON-VEHICULAR (PEDESTRIAN) SIGN (36"x36")
 - 23 (W1-7) SUPPLEMENTAL ARROW PLaque SIGN
 - 24 "AUTHORIZED VEHICLES ONLY"
 - 25 "BARRIED FREE PARKING" AND SUPPLEMENTAL PLaque SIGN "VAN ACCESSIBLE"
 - 26 "BARRIED FREE PARKING"

NOTE: ASTERISK INDICATES SIGN TO BE INSTALLED BY R.C.O.

CAUTION!!
 THE LOCATIONS AND ELEVATIONS OF EXISTING UNDERGROUND UTILITIES AS SHOWN ON THIS DRAWING ARE ONLY APPROXIMATE. NO GUARANTEE IS EITHER EXPRESSED OR IMPLIED AS TO THE COMPLETENESS OR ACCURACY THEREOF. THE CONTRACTOR SHALL BE EXCLUSIVELY RESPONSIBLE FOR DETERMINING THE EXACT UTILITY LOCATIONS AND ELEVATIONS PRIOR TO THE START OF CONSTRUCTION.



3 FULL WORKING DAYS BEFORE YOU CALL

811
 Know what's below
 Call before you dig
 MESS System, Inc.
 1-800-482-7171 www.messid.net

STATE OF MICHIGAN
 DEPARTMENT OF TECHNOLOGY, MANAGEMENT AND BUDGET
 DESIGN AND CONSTRUCTION DIVISION
 2430 Rochester Ct. Ste 100
 Troy, MI 48063-1872
 T 248 889 9000
 F 248 889 1044
 www.peainc.com

PEA, Inc.
 2430 Rochester Ct. Ste 100
 Troy, MI 48063-1872
 T 248 889 9000
 F 248 889 1044
 www.peainc.com

STATE OF MICHIGAN
 DEPARTMENT OF TECHNOLOGY, MANAGEMENT AND BUDGET
 DESIGN AND CONSTRUCTION DIVISION
 2430 Rochester Ct. Ste 100
 Troy, MI 48063-1872
 T 248 889 9000
 F 248 889 1044
 www.peainc.com

DIMENSION AND PAVING PLAN
WHITE LAKE BOATING ACCESS SITE
 PART OF THE MAP OF SECTION 13, T.24N., R.18E., S.10W., CO. CALHOUN, MI.
 DATE: 03/28/06
 DRAWN BY: J. M. KATZ
 CHECKED BY: J. M. KATZ
 DATE: 03/28/06

ORIGINAL
 ISSUE DATE: MARCH 5, 2010
 PEA JOB NO. 2006-2056
 SCALE: 1"=20'
 DRAWING NUMBER:
C-4